



Parallel Robot

D3W-3/600-250

The standard cycle time is less than 0.5s to meet the demand for maximum speed and minimum volume

Special compression spring design ensure that the service life and easy to dismounting.

This robot is very suitable for high-speed and high-precision production operations in narrow spaces of 3C manufacturing and other industries. It is mainly used for assembling, transporting and inspecting small workpieces.

SPECIFICATIONS

Robot Version D3W-3/600-250

Axes. 3

Maximum Payload 3kg

Maximum Working Diameter 600 mm

Working Height 250 mm

Mounting Inverted

Manipulator Weight 38.7 kg

Angle Range of Active Arm

Upper Arm 42.5°

Lower Arm 69.8°

Repeatability

Position Repeatability ± 0.05 mm

Power Requirements

Supply Voltage 220V/380V/3-Phase 220V/1-Phase 49-61 HZ

Rated Power 1.2 kW

Transformer rating 3kVA

Environment Requirements

Storage Temperature -10°C - 70°C

Working Temperature -10°C - 50°C

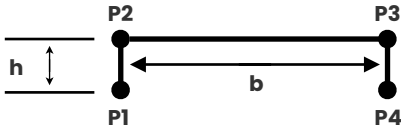
Humidity Range Max. 90%

Protection IP55





LOAD-FREQUENCY

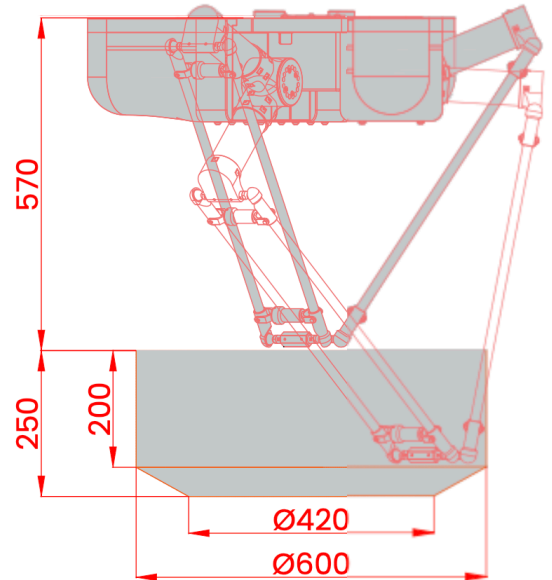


- Trajectory 1 $h=25, b=305$ P1 - P2 - P3 - P4 - P3 - P2 - P1
 Trajectory 2 $h=25, b=305$ P1 - P2 - P3 - P4 - P3 - P2 - P1
 Trajectory 3 $h=25, b=305$ P1 - P2 - P3 - P2 - P1
 Trajectory 4 $h=25, b=305$ P1 - P2 - P3 - P2 - P1

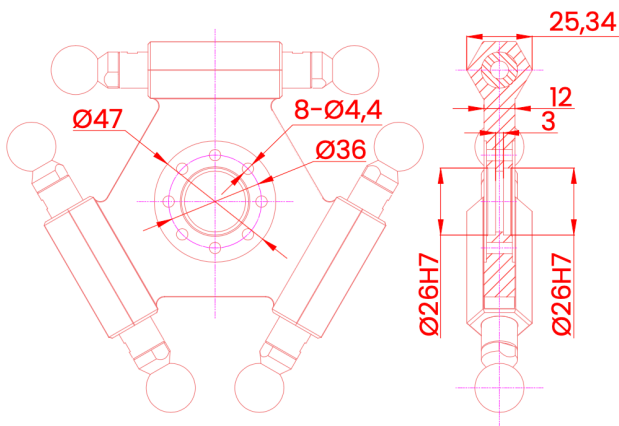
Cycles/min	0.00kg	0.50kg	1.00kg	1.50kg	2.00kg	2.50kg	3.00kg
Trajectory 1	137.50	125.00	100.00	87.50	81.25	75.00	50.00
Trajectory 2	118.75	100.00	87.50	75.00	62.50	56.25	43.75
Trajectory 3	165.00	150.00	120.00	105.00	97.50	90.00	60.00
Trajectory 4	136.56	115.00	100.63	86.25	71.88	64.69	50.31

The cycle times are measured under real conditions, but may vary depending on the actual application.

Dimensions & Range of Motion (mm)



Flange (mm)



Mounting Base (mm)

